

FLOOR PLANS CAPACITY CHARTS

THE WESTIN
SAVANNAH HARBOR
GOLF RESORT & SPA



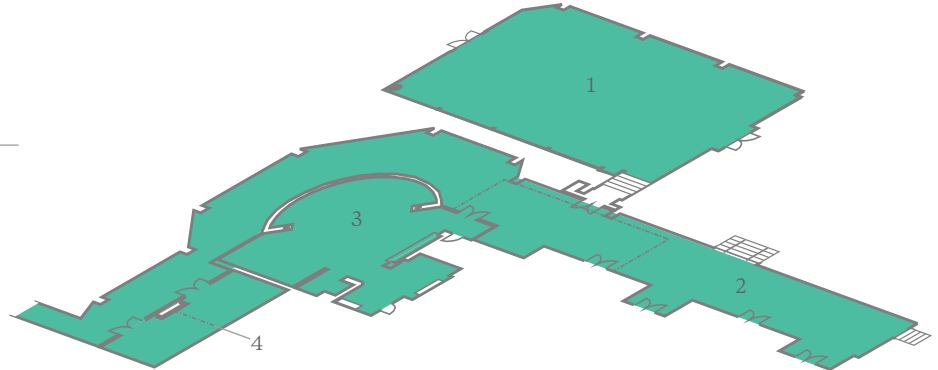
MEETING SPACE OVERVIEW, PART ONE

1 Resort Drive
Savannah, Georgia 31421
T 912.201.2000 F 912.201.2001
E info.savannah@westin.com
westinsavannah.com

THE WESTIN
SAVANNAH HARBOR
GOLF RESORT & SPA

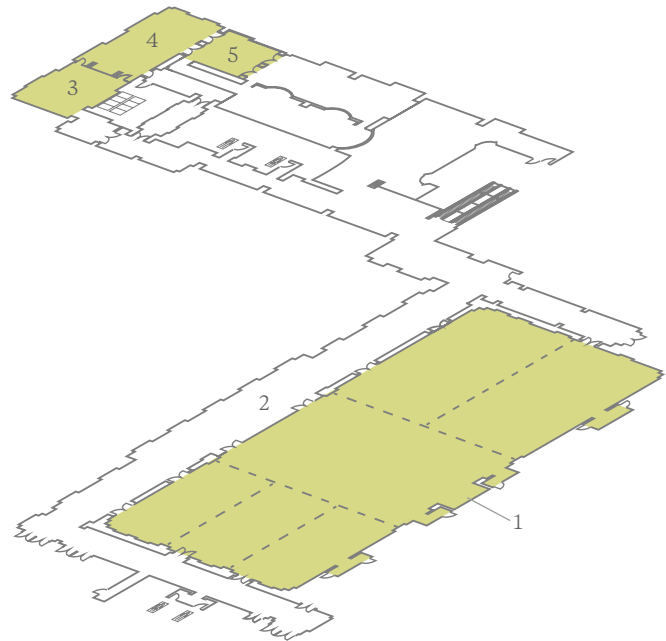
THE CLUB AT SAVANNAH HARBOR

1. CLUB PAVILION
2. CLUBHOUSE TERRACE
3. CHAMPIONS GRILL
4. CLUB BOARDROOM



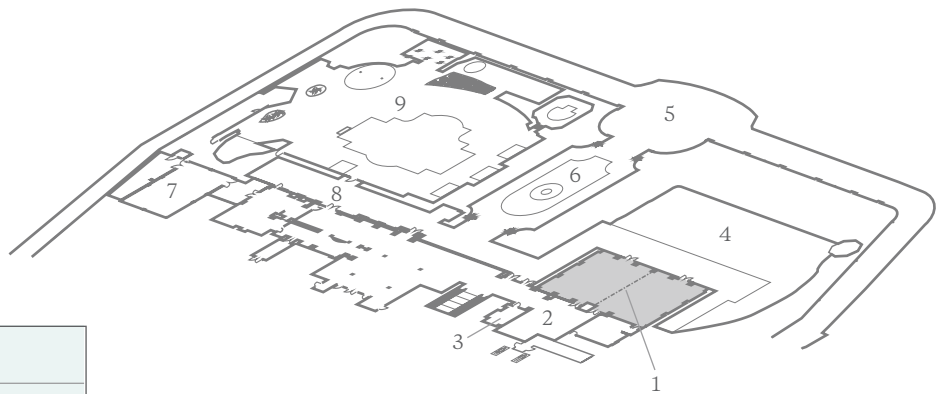
SECOND FLOOR

1. GRAND BALLROOM
2. GRAND BALLROOM PREFUNCTION
3. MOORINGS
4. RIVERSCAPE
5. PRIVATE DINING ROOM



FIRST FLOOR

1. HARBOR BALLROOM
2. HARBOR BALLROOM PREFUNCTION
3. TANGENT
4. HARBOR LAWN
5. RIVERFRONT ESPLANADE
6. RIVER LAWN
7. MIDNIGHT SUN PAVILION
8. MIDNIGHT SUN PATIO
9. POOL DECK



ROOMS AT A GLANCE

THE WESTIN SAVANNAH HARBOR
GOLF RESORT & SPA

| | |
|-------------------------------|---|
| TOTAL GUEST ROOMS | 403 |
| TOTAL MEETING ROOMS | 15 |
| LARGEST MEETING ROOM CAPACITY | 1,600 |
| LARGEST MEETING ROOM SIZE | 1,072 m ² / 11,537 ft ² |

Additional spaces for meetings and events, not displayed here, may also be available. Contact your hotel representative for more information.

This document contains approximate measurements and square footage that are for illustrative purposes only. We cannot guarantee the floor plan accuracy or completeness, therefore encourage you to review the space to make sure it is suitable for your event.

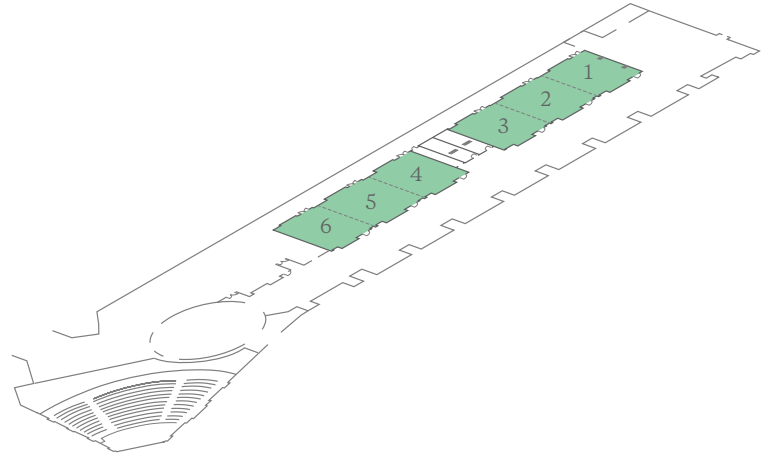
MEETING SPACE OVERVIEW, PART TWO

1 Resort Drive
Savannah, Georgia 31421
T 912.201.2000 F 912.201.2001
E info.savannah@westin.com
westinsavannah.com

THE WESTIN
SAVANNAH HARBOR
GOLF RESORT & SPA

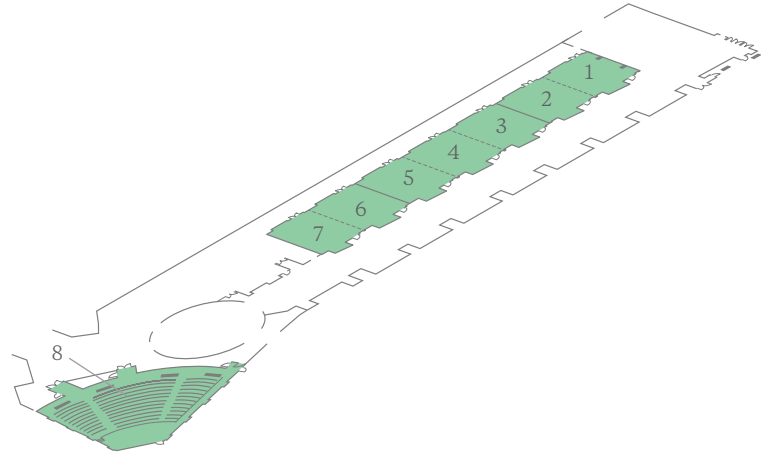
SAVANNAH HARBOR CONFERENCE CENTER, SECOND FLOOR

1. MEETING ROOM 200
2. MEETING ROOM 201
3. MEETING ROOM 202
4. MEETING ROOM 203
5. MEETING ROOM 204
6. MEETING ROOM 205



SAVANNAH HARBOR CONFERENCE CENTER, FIRST FLOOR

1. MEETING ROOM 100
2. MEETING ROOM 101
3. MEETING ROOM 102
4. MEETING ROOM 103
5. MEETING ROOM 104
6. MEETING ROOM 105
7. MEETING ROOM 106
8. OGLETHORPE AUDITORIUM



ROOMS AT A GLANCE

SAVANNAH HARBOR CONFERENCE CENTER:

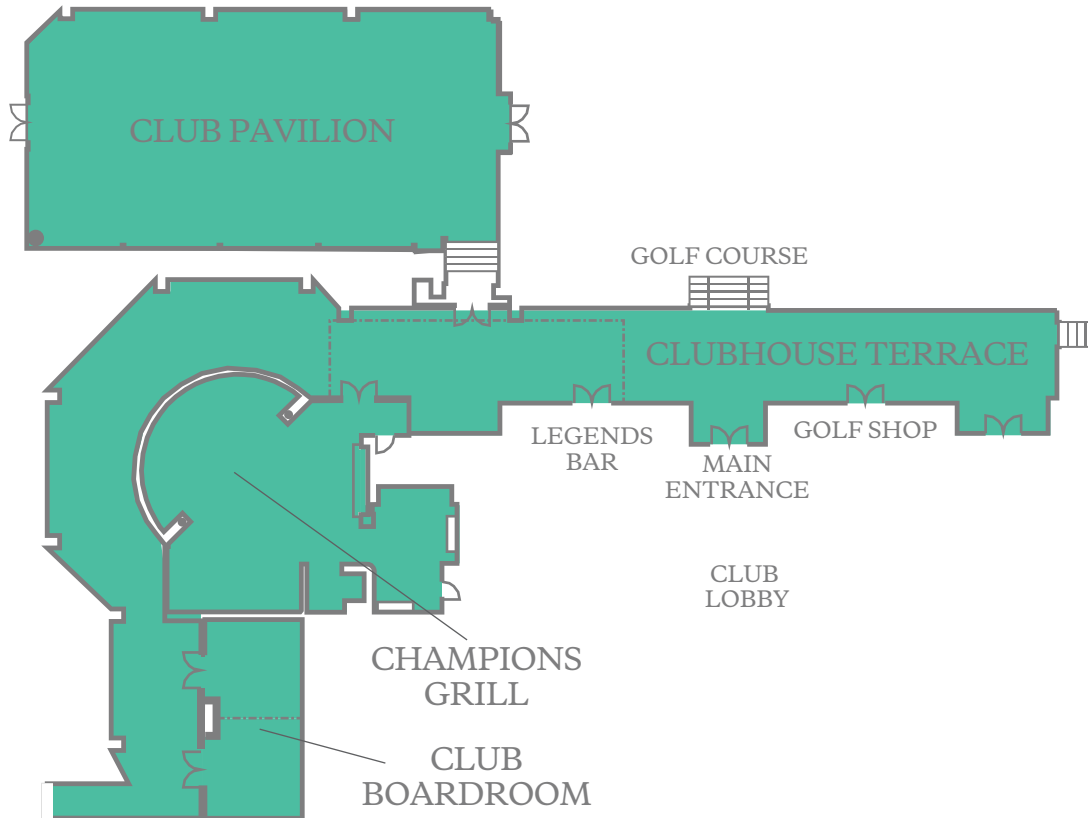
| | |
|-------------------------------|---|
| TOTAL MEETING ROOMS | 14 |
| LARGEST MEETING ROOM CAPACITY | 372 |
| LARGEST MEETING ROOM SIZE | 387.22 m ² / 4,168 ft ² |

The space shown above is the sole property of the Savannah Harbor Conference Center. Additional spaces for meetings and events, not displayed here, may also be available. Contact your hotel representative for more information.

MEETING SPACE THE CLUB AT SAVANNAH HARBOR

1 Resort Drive
Savannah, Georgia 31421
T 912.201.2000 F 912.201.2001
E info.savannah@westin.com
westinsavannah.com

THE WESTIN
SAVANNAH HARBOR
GOLF RESORT & SPA



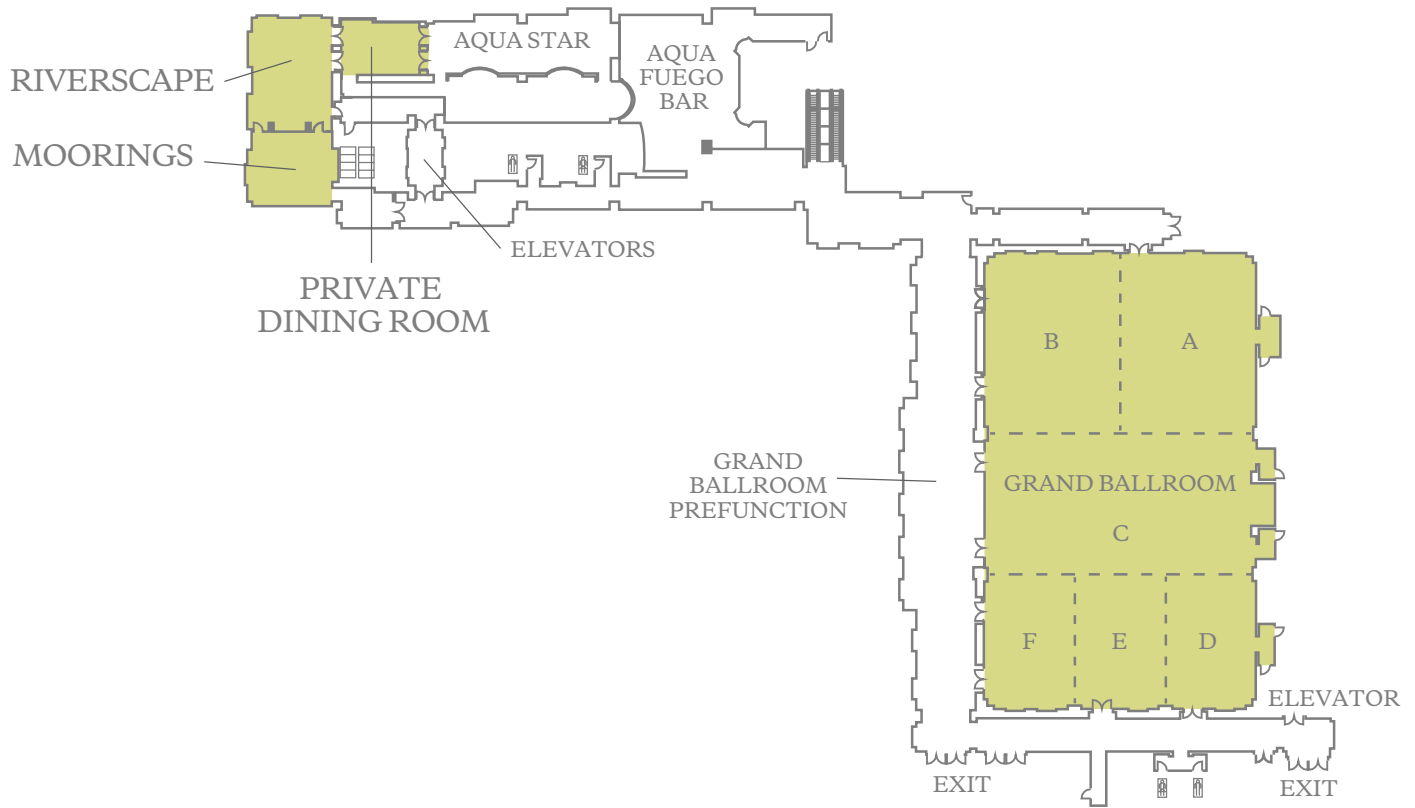
| | DIMENSIONS | AREA (SQ. FT.) | MAX CEILING HEIGHT | THEATER | CLASSROOM | BANQUET | CONFERENCE | U-SHAPE | HOLLOW SQ. | RECEPTION |
|---------------------|------------|----------------|--------------------|---------|-----------|---------|------------|---------|------------|-----------|
| ■ CHAMPIONS GRILL | 51' X 36' | 1,590 | 12' | — | — | — | — | — | — | 167 |
| ■ CLUB BOARDROOM | 16' X 34' | 539 | 11.3' | 48 | 24 | 20 | 18 | — | — | 56 |
| ■ CLUB PAVILION | 50' X 82' | 3,300 | 15.6' | 320 | 162 | 180 | 66 | 48 | 78 | 347 |
| ■ CLUBHOUSE TERRACE | 91' X 171' | 3,988 | 30' | — | — | — | — | — | — | 419 |

This document contains approximate measurements and square footage that are for illustrative purposes only. We cannot guarantee the floor plan accuracy or completeness, therefore encourage you to review the space to make sure it is suitable for your event.

MEETING SPACE SECOND FLOOR

1 Resort Drive
Savannah, Georgia 31421
T 912.201.2000 F 912.201.2001
E info.savannah@westin.com
westinsavannah.com

THE WESTIN
SAVANNAH HARBOR
GOLF RESORT & SPA



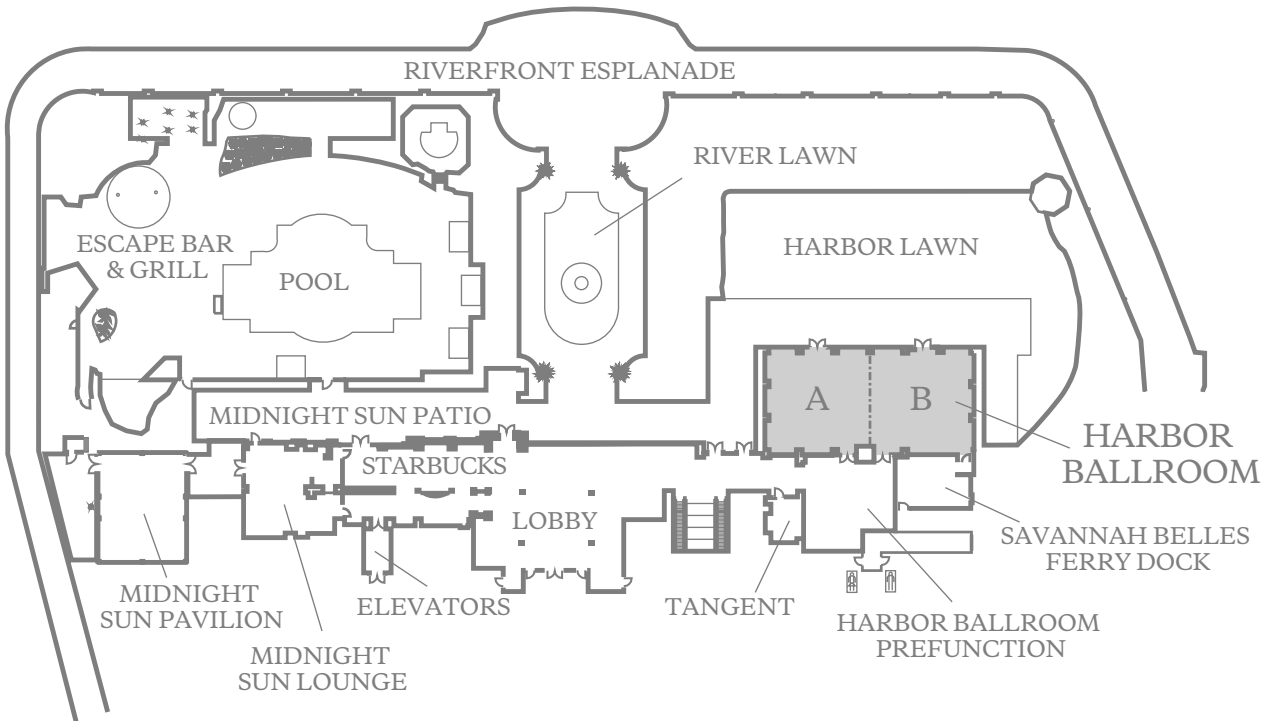
| | DIMENSIONS | AREA (SQ. FT.) | MAX CEILING HEIGHT | THEATER | CLASSROOM | BANQUET | CONFERENCE | U-SHAPE | HOLLOW SQ. | RECEPTION |
|------------------------------|------------|----------------|--------------------|---------|-----------|---------|------------|---------|------------|-----------|
| ■ GRAND BALLROOM | 82' X 140' | 11,372 | 16' | 1,224 | 672 | 840 | — | — | — | 1,600 |
| ■ GRAND BALLROOM PREFUNCTION | 25' X 156' | 3,204 | 16' | — | — | — | — | — | — | 337 |
| ■ SALON A | 41' X 56' | 2,265 | 16' | 260 | 120 | 120 | — | 45 | 60 | 238 |
| ■ SALON B | 41' X 56' | 2,263 | 16' | 260 | 120 | 120 | — | 45 | 60 | 238 |
| ■ SALON C | 82' X 43' | 3,492 | 16' | 400 | 225 | 210 | 66 | 72 | 78 | 367 |
| ■ SALON D | 28' X 41' | 1,118 | 16' | 108 | 63 | 60 | 30 | 33 | 36 | 117 |
| ■ SALON E | 27' X 41' | 1,119 | 16' | 108 | 63 | 60 | 30 | 33 | 36 | 117 |
| ■ SALON F | 27' X 41' | 1,117 | 16' | 108 | 63 | 60 | 30 | 33 | 36 | 117 |
| ■ SALON A - B | 82' X 56' | 4,527 | 16' | 504 | 234 | 280 | 66 | 78 | 88 | 476 |
| ■ SALON A - C | 82' X 98' | 8,019 | 16' | 912 | 432 | 560 | 48 | 100 | 96 | 844 |
| ■ SALON C - F | 82' X 84' | 6,845 | 16' | 798 | 360 | 490 | — | — | — | 720 |
| ■ SALON D - E | 55' X 41' | 2,237 | 16' | 260 | 120 | 150 | 42 | 48 | 54 | 235 |
| ■ SALON D - F | 82' X 41' | 3,354 | 16' | 400 | 180 | 210 | 66 | 72 | 78 | 353 |
| ■ SALON E - F | 55' X 41' | 2,236 | 16' | — | 120 | 150 | 42 | 48 | 54 | 235 |
| ■ MOORINGS | 45' X 29' | 771 | 14' | — | — | — | 12 | — | — | — |
| ■ PRIVATE DINING ROOM | 31' X 20' | 503 | 14' | — | — | — | — | — | — | — |
| ■ RIVERSCAPE | 26' X 34' | 853 | 14' | 60 | 48 | 40 | 24 | 27 | 30 | 89 |

This document contains approximate measurements and square footage that are for illustrative purposes only. We cannot guarantee the floor plan accuracy or completeness, therefore encourage you to review the space to make sure it is suitable for your event.

MEETING SPACE FIRST FLOOR

1 Resort Drive
Savannah, Georgia 31421
T 912.201.2000 F 912.201.2001
E info.savannah@westin.com
westinsavannah.com

THE WESTIN
SAVANNAH HARBOR
GOLF RESORT & SPA



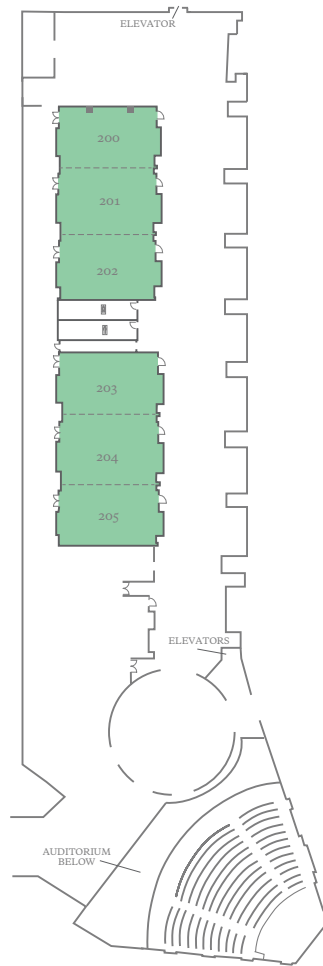
| | DIMENSIONS | AREA (SQ. FT.) | MAX CEILING HEIGHT | THEATER | CLASSROOM | BANQUET | CONFERENCE | U-SHAPE | HOLLOW SQ. | RECEPTION |
|-----------------------------|-------------|----------------|--------------------|---------|-----------|---------|------------|---------|------------|-----------|
| ■ HARBOR BALLROOM | 45' X 83' | 3,372 | 14' | 360 | 168 | 210 | 66 | 66 | 78 | 354 |
| HARBOR BALLROOM PREFUNCTION | 31' X 37' | 1,094 | 14' | — | — | — | — | — | — | 114 |
| ■ HARBOR A | 42' X 41' | 1,678 | 14' | 180 | 72 | 90 | 30 | 36 | 48 | 176 |
| ■ HARBOR B | 45' X 41' | 1,702 | 14' | 180 | 72 | 90 | 30 | 36 | 48 | 179 |
| HARBOR LAWN | 102' X 140' | 8,883 | — | 630 | — | 300 | — | — | — | 935 |
| MIDNIGHT SUN PATIO | 29' X 125' | 2,511 | — | — | — | — | — | — | — | 264 |
| MIDNIGHT SUN PAVILION | 54' X 47' | 2,010 | 15' | — | — | — | — | — | — | 75 |
| POOL | 127' X 166' | 11,420 | — | — | — | — | — | — | — | — |
| RIVER LAWN | 87' X 48' | 2,373 | — | 300 | — | — | — | — | — | 200 |
| RIVERFRONT ESPLANADE | 269' X 451' | 14,011 | — | 400 | — | — | — | — | — | 1,474 |
| TANGENT | 17' X 13' | 209 | 9.9' | — | — | — | — | — | — | — |

This document contains approximate measurements and square footage that are for illustrative purposes only. We cannot guarantee the floor plan accuracy or completeness, therefore encourage you to review the space to make sure it is suitable for your event.

MEETING SPACE
SAVANNAH HARBOR
CONFERENCE CENTER,
SECOND FLOOR

1 Resort Drive
Savannah, Georgia 31421
T 912.201.2000 F 912.201.2001
E info.savannah@westin.com
westinsavannah.com

THE WESTIN
SAVANNAH HARBOR
GOLF RESORT & SPA



| | DIMENSIONS | AREA (SQ. FT.) | MAX CEILING HEIGHT | THEATER | CLASSROOM | BANQUET |
|--------------------------------|------------|----------------|--------------------|-----------|-----------|-----------|
| ■ MEETING ROOM 200 | 43' X 27' | 1,261 | 16' | 110 - 124 | 70 - 80 | 60 - 80 |
| ■ MEETING ROOM 201 | 43' X 30' | 1,351 | 16' | 110 - 124 | 70 - 80 | 60 - 80 |
| ■ MEETING ROOMS 202 | 43' X 29' | 1,366 | 16' | 110 - 124 | 70 - 80 | 60 - 80 |
| ■ MEETING ROOM 200 & 201 | 43' X 57' | 2,612 | 16' | 220 - 248 | 140 - 160 | 120 - 160 |
| ■ MEETING ROOM 201 & 202 | 43' X 59' | 2,717 | 16' | 220 - 248 | 140 - 180 | 120 - 160 |
| ■ MEETING ROOM 200, 201 & 202 | 43' X 87' | 3,978 | 16' | 330 - 372 | 210 - 240 | 180 - 240 |
| ■ MEETING ROOMS 203 | 43' X 27' | 1,246 | 16' | 110 - 124 | 70 - 80 | 60 - 80 |
| ■ MEETING ROOMS 204 | 43' X 30' | 1,361 | 16' | 110 - 124 | 70 - 80 | 60 - 80 |
| ■ MEETING ROOMS 205 | 43' X 27' | 1,251 | 16' | 110 - 124 | 70 - 80 | 60 - 80 |
| ■ MEETING ROOM 203 & 204 | 43' X 57' | 2,607 | 16' | 220 - 248 | 140 - 160 | 120 - 160 |
| ■ MEETING ROOM 204 & 205 | 43' X 57' | 2,612 | 16' | 220 - 248 | 140 - 180 | 120 - 160 |
| ■ MEETING ROOMS 203, 204 & 205 | 43' X 84' | 3,858 | 16' | 330 - 372 | 210 - 240 | 180 - 240 |

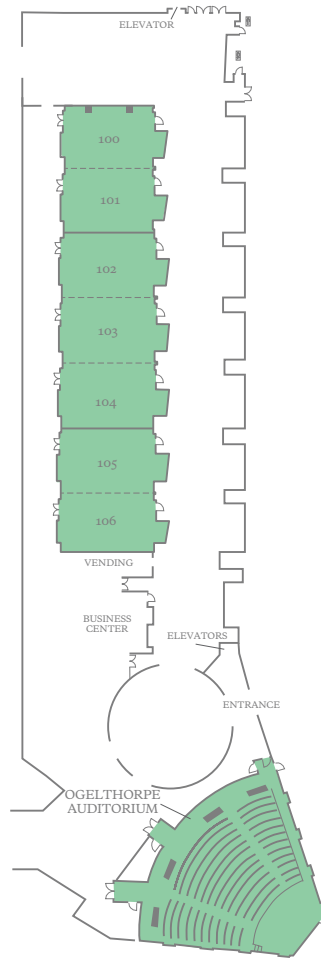
THE CONNECTING SAVANNAH INTERNATIONAL TRADE AND CONVENTION CENTER FEATURES 13,225 SQUARE FEET OF ADDITIONAL MEETING SPACE FOR AN OVERALL TOTAL OF MORE THAN 35,000 SQUARE FEET IN COMBINATION WITH THE HOTEL MEETING SPACE. THE SPACE SHOWN ABOVE IS THE SOLE PROPERTY OF THE SAVANNAH HARBOR CONFERENCE CENTER.

This document contains approximate measurements and square footage that are for illustrative purposes only. We cannot guarantee the floor plan accuracy or completeness, therefore encourage you to review the space to make sure it is suitable for your event.

MEETING SPACE SAVANNAH HARBOR CONFERENCE CENTER, FIRST FLOOR

1 Resort Drive
Savannah, Georgia 31421
T 912.201.2000 F 912.201.2001
E info.savannah@westin.com
westinsavannah.com

THE WESTIN
SAVANNAH HARBOR
GOLF RESORT & SPA



| | DIMENSIONS | AREA (SQ. FT.) | MAX CEILING HEIGHT | THEATER | CLASSROOM | BANQUET |
|--------------------------------|-------------|----------------|--------------------|-----------|-----------|-----------|
| ■ MEETING ROOM 100 | 42' X 29' | 1,397 | 14' | 124 | 70 - 80 | 60 - 80 |
| ■ MEETING ROOM 101 | 42' X 30' | 1,397 | 14' | 124 | 70 - 80 | 60 - 80 |
| ■ MEETING ROOMS 100 & 101 | 42' X 59' | 2,794 | 14' | 248 | 140 - 160 | 120 - 160 |
| ■ MEETING ROOM 102 | 42' X 29' | 1,409 | 14' | 124 | 70 - 80 | 60 - 80 |
| ■ MEETING ROOM 103 | 42' X 30' | 1,421 | 14' | 124 | 70 - 80 | 60 - 80 |
| ■ MEETING ROOM 104 | 42' X 29' | 1,338 | 14' | 124 | 70 - 80 | 60 - 80 |
| ■ MEETING ROOMS 102 & 103 | 42' X 59' | 2,830 | 14' | 248 | 140 - 160 | 120 - 160 |
| ■ MEETING ROOMS 103 & 104 | 42' X 59' | 2,759 | 14' | 248 | 140 - 160 | 120 - 160 |
| ■ MEETING ROOMS 102, 103 & 104 | 42' X 89' | 4,168 | 14' | 372 | 210 - 240 | 180 - 240 |
| ■ MEETING ROOM 105 | 42' X 29' | 1,338 | 14' | 124 | 70 - 80 | 60 - 80 |
| ■ MEETING ROOM 106 | 42' X 26' | 1,220 | 14' | 124 | 70 - 80 | 60 - 80 |
| ■ MEETING ROOMS 105 & 106 | 42' X 56' | 2,558 | 14' | 248 | 140 - 160 | 120 - 160 |
| ■ OGLETHORPE AUDITORIUM | 108' X 102' | 3,735 | 22' | 367 FIXED | — | — |

THE CONNECTING SAVANNAH INTERNATIONAL TRADE AND CONVENTION CENTER FEATURES 13,225 SQUARE FEET OF ADDITIONAL MEETING SPACE FOR AN OVERALL TOTAL OF MORE THAN 35,000 SQUARE FEET IN COMBINATION WITH THE HOTEL MEETING SPACE. THE SPACE SHOWN ABOVE IS THE SOLE PROPERTY OF THE SAVANNAH HARBOR CONFERENCE CENTER.

This document contains approximate measurements and square footage that are for illustrative purposes only. We cannot guarantee the floor plan accuracy or completeness, therefore encourage you to review the space to make sure it is suitable for your event.



1 Resort Drive
Savannah, Georgia 31421
T 912.201.2000 F 912.201.2001
E info.savannah@westin.com
westinsavannah.com

THE WESTIN
SAVANNAH HARBOR
GOLF RESORT & SPA